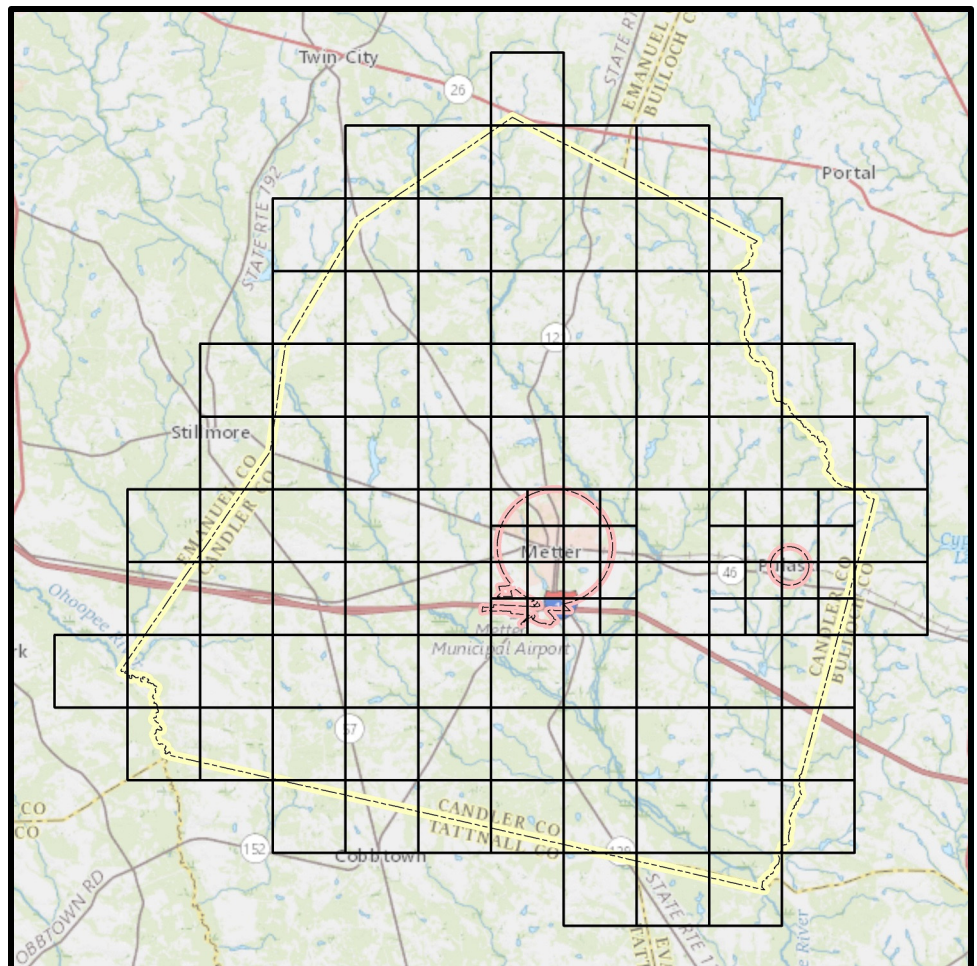


REQUEST FOR PROPOSALS

DIGITAL ORTHOPHOTOGRAPHY SERVICES AND PRODUCTS

Addendum One

Issue Date: August 24, 2018



Candler County Board of Tax Assessors
Courthouse Square
35 SW Broad Street, Suite E
Metter, Georgia 30439

FOR INFORMATION CONTACT:

MGrier@CandlerCo-GA.gov

1 ADDENDUM ONE

To All Prospective Offerors:

In reference to the "Request for Proposals - Digital Orthophotography Services and Products", the following changes, answers to questions, and supplemental information are hereby incorporated into the RFP. It shall be the responsibility of each Offeror to visit the County's website to determine if addendum(s) were issued and, if so, to obtain such addendum(s). Failure to acknowledge an addendum shall not relieve the Offeror from its obligation to comply with the provisions of the addendum(s).

1.A CHANGES

This addendum does not change any provisions stated in the original RFP.

1.B SUBMITTED QUESTIONS AND ANSWERS

Submitted questions and the County's answers are presented below in the following format:

Submitted By: Organization (Date of Submittal)

Question

County response.

1.B.1 Submitted By: Quadcopter Productions (August 9,2018)

My organization recently reviewed your request for a proposal on Digital Orthophotography and Services in your county. We were immensely curious why there was a strong restriction against UAS, and SUAS aircraft in this project. As I am pilot myself for many years both in the military and civilian sector, we cannot begin to fathom the reasons for this since it would save your taxpayers exponentially due to the obvious costs associated with manned aircraft. We were just curious why the aversion to drones? They are cheaper and more suited to collect data unless we are missing something?

That is why our firm has adapted to DUAS and UAS over flying our previous aircraft for acquiring Photogrammetry and GIS data. For example, you requested 15 cm accuracy in the document and just last week we had completed a project that was well within 7mm of accuracy of which our client had only requested at most 3 cm.

Regardless of our ineligibility, I still look forward to your response to at the most be informative for our organization going forward. Thank you for your time.

The County considers the operation of unmanned aircraft systems as "severely limited" based upon operational rules stated in FAA Part 107 and the area of coverage required (330+ square miles).

- *Keep the unmanned aircraft within visual line-of-sight*
- *Fly at or below 400 feet*
- *Fly during daylight or civil twilight*
- *Fly at or under 100 mph*
- *Yield right-of-way to manned aircraft*
- *Do not fly directly over people*
- *Do not fly from a moving vehicle, unless in a sparsely populated area*
- *Restricted to Class G airspace.*

Candler County includes an active airport, Metter Municipal Airport (KMHP), several communication towers exceeding 400 feet AGL and two suburban areas. While we understand that waivers may be secured from the FAA for drone operations, we feel that it is in the best interest of the project to rely upon a manned system with fewer restrictions and the ability to quickly capture the entire project area.

1.B.2 Submitted By: ESP Associates Inc. (August 9, 2018)

ESP Associates, Inc. is interested in submitting our unique qualifications to Candler County for the Digital Orthophotography Services and Products (RFP-1550-01). We would like to submit the following questions:

Are there other materials for the RFP? (Project boundaries, areas where the County wants the 6-inch and 3-inch imagery, guidelines for submission, etc.)

Shapefiles for the County boundary, City limits, six-inch (15 cm) per RFP Appendix A.1 and three-inch (7.5 cm) per RFP Appendix A.2 and A.3, and road centerline network are available for download from the County's website. Please refer to RFP Section 3 "Proposal Format and Content" for submission guidelines.

<https://metter-candlercounty.com/>

Does our firm have to be registered with the County or the State of Georgia to perform the services outlined in the Digital Orthophotography Services and Products RFP?

No, respondents need to meet the professional requirements as stated within the RFP.

Does the County have any preferences or guideline in terms of offshore labor?

Per RFP Section 4.1.1 (page 4-1): "Preference will be given to respondents who certify that all work shall be completed within a political division of the United States (i.e. state, federal district, or territory)."

We appreciate any information you can provide, and we look forward to submitting our proposal for Digital Orthophotography Services to the County.

1.B.3 Submitted By: Sanborn (August 9, 2018)

Sanborn is very interested in responding to your 'Request for Digital Orthophotography Services and products. In order to properly design the flight line layout and provide the most accuracy estimate, please provide a copy of the project boundary map/tile layout referenced in Section A.1. This can be provided in Esri shapefile, .kmz, dxf, format, etc. I could not locate this on the qpublic website provided.

Shapefiles for the County boundary, City limits, six-inch (15 cm) per RFP Appendix A.1 and three-inch (7.5 cm) per RFP Appendix A.2 and A.3, and road centerline network are available for download from the County's website.

<https://metter-candlercounty.com/>

1.B.4 Submitted By: Tuck Mapping Solutions, Inc. (August 13, 2018)

I have a couple of questions concerning the RFP for Digital Orthophotography Services & Products:

Section 3.2.1 Qualifications: Will an audited balance sheet and an audited statement of income be sufficient for item #2 – Financial Stability?

Yes.

What level of detail are you looking for concerning Item #3 – Current Workload and Projects?

- Number of projects committed and / or anticipated not including Candler County
- Staff and resources committed and / or anticipated not including Candler County
- Duration of projects committed and / or anticipated not including Candler County

The County wishes to ensure that respondents can adequately handle this project by gauging their existing workload and commitments.

1.B.5 Submitted By: Kucera International Inc. (August 17, 2018)

Section 2.2.2: What is the specified resolution for the oblique image capture?

Respondent may propose a resolution that they believe will provide the most value to the County.

Section 2.2.3: Does the street centerline product include public roads only?

The Transportation Nodes and Centerlines data set consists of both public and private streets per RFP Section 2.2.3.3. The County has a current centerline dataset and wishes to improve / enhance the geometry of the centerlines. A road centerline network (shapefile) is available for download from the County’s website.

<https://metter-candlercounty.com/>

Section 2.2.3: Some unpaved roads or long driveways can be interpreted as roads from aerial photos. What’s the County’s definition of road vs. driveway?

The Transportation Nodes and Centerlines data set consists of both public and private streets per RFP Section 2.2.3.3. The County has a current centerline dataset and wishes to improve / enhance the geometry of the centerlines. A road centerline network (shapefile) is available for download from the County’s website. This shapefile shall be used to determine both public and private streets.

<https://metter-candlercounty.com/>

Section 2.2.4: What Z value is being attributed to building footprints - roof elevation, foundation elevation, or building height?

Foundation.

1.B.6 Submitted By: Tuck Mapping Solutions, Inc. (August 17, 2018)

Section 2.1.1: Can the 2006 DEM supplied by the County be edited/modified and then used? This would reduce some of the expense in the project.

No, the County expects the Successful Respondent to develop a new DEM in support of this project.

1.B.7 Submitted By: Eagleview (August 17, 2018)

Can you please identify the parcel count for this project? We are trying to determine a total count to apply accurate pricing for optional item #4.

There are 6902 parcels in the current parcel data set.

Can you please identify the CAD vendor you are currently using within your E911 centers?

1 ADDENDUM ONE

Candler County contracts with Bulloch County for E911 services.

What GSD are you requiring for the optional oblique imagery?

Respondent may propose a resolution that they believe will provide the most value to the County.

1.C SUPPLEMENTAL DATA SET

Shapefiles for the County boundary, City limits, six-inch (15 cm) per RFP Appendix A.1 and three-inch (7.5 cm) per RFP Appendix A.2 and A.3, and road centerline network are available for download from the County's website. Please refer to RFP Section 3 "Proposal Format and Content" for submission guidelines. Offerors are encourage to use this information in developing their responses.

<https://metter-candlercounty.com/>

1.D ADDENDUM ACKNOWLEDGEMENT

Complete this addendum acknowledgement form, sign and submit form with your proposal. Failure to do so will result in elimination of your submittal from further consideration.

I hereby acknowledge receipt of Addendum One for the "Request for Proposals - Digital Orthophotography Services and Products".

Authorized Signature _____ Date _____

Print/Type Name _____

Print/Type Company Name Here _____